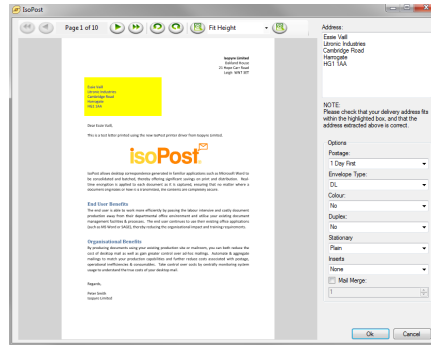


isoPost Client

A Windows printer driver application that allows isoPost users to submit and lodge documents to the isoPost Server.

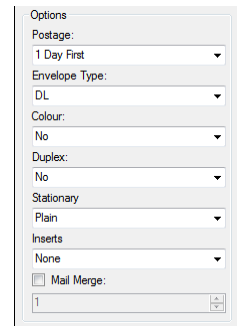


isoPost Client Submission Interface

User Configuration Options

The following submission options can be offered to the end user to tailor the document in line with a production environment:

- Postage
- Envelope Type
- Colour
- Duplex
- Custom Options - You can configure further fulfilment options (such as Stationery type and Inserts)
- Mail Merge - Submit documents that have been created by Microsoft Word Mail Merge
- Variable Batch Print - Automatically process a batch of documents of variable length



Document Format

The document is converted to a PDF/A file format with all necessary metadata embedded. This ensures that all necessary resources are carried with the document for use at production time.

Security

The Document is encrypted using 192bit Triple DES encryption, this means the security & integrity of the document can be maintained even if transmitted over a non-secure channel.

Document Transmission

The document can be lodged using either the FTP or SFTP protocol.

Supported Operating Systems

- Microsoft Windows XP
- Microsoft Windows Vista
- Microsoft Windows 7

isoPost Security Summary

- Documents are encrypted using 192bit Triple DES encryption at submission time.
- The documents remain fully encrypted even when stored on the central database; they are only decrypted when production print batches are generated ready to be submitted into a production environment.
- User configuration options are encrypted to prevent unauthorised users from altering their settings.

Contact Us

For more information and to discover how Isopyre can help you to deliver cost savings and greater control over desktop mail, please contact us.

Tel: +44 (0)1942 263 483

Email: info@isopyre.com

Web: www.isopyre.com

isoPost Production

isoPost Production is a suite of applications which facilitate the reception and processing of documents submitted by the end users of the isoPost Client.

isoPost Server

isoPost Server is the document capture service for all items being processed. The isoPost Server receives documents submitted by users and stores them, along with their fulfillment requirements, in the central document repository.

isoPost Production

isoPost Production enables the aggregation of received documents into print ready production batches. Based on the production environment requirements, isoPost Production can create production batches tailored to optimise the efficiency of the print facility.

Document Reports – Run custom reports against documents stored in the database for the purpose of reporting or print batch generation. Utilise existing postal sortation & address validation software to determine production batch content & sequence.

Production Batches – Using built in or custom reports, generate production ready batches in PDF/A format to ensure all document resources are available at production time.

Document Enhancement – Add machine enclosing marks, barcode & sequence numbers to documents to allow isoPost production batches to fit seamlessly into your existing production processes.

isoPost Administration

The isoPost Administration utility allows an administrator to create & modify the configuration files for users of the isoPost Client application. The configuration files generated are encrypted to ensure users are only presented with production features you want them to have access to.

isoPost Portal

The isoPost Portal is a web based interface which allows end users to gain access to documents that have been submitted into the isoPost system.

- View document information such as fulfilment options, recipient address & document status
- PDF preview of documents in the system
- Self-service user administration
- Users can access their own documents, or those of their team/department/company
- Deploy across multiple brands

Implementation Requirements

Operating System	Microsoft Windows Server 2003 x86 & x64 Editions Microsoft Windows Server 2008 x86 & x64 Editions Microsoft Windows XP Microsoft Windows Vista Microsoft Windows 7 x86 & x64 Editions
Memory (RAM)	2 GB
FTP Server Protocols	FTP & SFTP
Database Software	Microsoft SQL Server 2005 Microsoft SQL Server 2005 Express Microsoft SQL Server 2008 Microsoft SQL Server 2008 Express
Web Server Software	Microsoft Internet Information Services (IIS) 7.x
Database Storage Capacity	Dependent on size & volume of documents to be stored
Disk Storage	Dependent on size & volume of production files to be produced

isoPost Glossary of Terms

Database

The central database used by isoPost to store all documents submitted by the users.

isoClick

A unit of measurement used for billing purposes. Equivalent to 1 document submitted into the system.

isoPost

Collective term for all the isoPost software components.

isoPost Administration

Utility that allows isoPost Providers to create user licence files.

isoPost Billing

Utility that allows isoPost Providers to generate click reports of their system usage.

isoPost Client

The printer driver application that allows isoPost Users to submit and lodge documents to the isoPost Server.

isoPost Connections

Utility that allows isoPost Providers to change their server connection settings.

isoPost Portal

The isoPost Portal is a web based interface which allows end users to gain access to documents that have been submitted.

isoPost Production

Command line utility which allows isoPost Providers to generate print ready batches from the Database. Also the collective term for all the server side isoPost applications.

isoPost Provider

An organisation/department who operate the isoPost service. Term typically referred to by users of the system.

isoPost Server

The service running on the isoPost Provider site which collects documents from the FTP site and adds them to the database.

isoPost Service

The service that an isoPost Provider offers to its customers.

isoPost User

Person using the isoPost Client to create and lodge documents.

FTP Site

The location where the isoPost Client delivers its document submissions. The isoPost Server monitors this location to lodge documents into the database.

Licence File

File used by isoPost Client to determine what options the user has access to.

